



# STREET FURNITURE

## What does street furniture mean ?

It is all that is street surrounding equipped with.

The street furniture means to urban exterior just as the furniture means to interior.

### Park and street elements:

- benches
- litter bins
- bicycle racks
- planters
- tree grids
- bollards and railings
- drinking fountains



Information equipment :

- poster boards
- urban orientation systems
- information holders
- advertising cases

Architecture elements :

- bus stop shelters
- kiosks
- telephone boxes
- street lamps



**What makes the street furniture ?**

- it is effective life is shorter than life cycle of surrounding architecture
- it is light
- it is easily replaceable



## What can street furniture do?

- It connects a man to architecture,  
we can touch it



## What can street furniture do?

- it may enhance any common urban area





## What can street furniture do ?

- upon a quality architectural concept it creates a beautiful place from a street



## What can street furniture do ?

- usually it represents less than 10% of total cost of project



The opener the present society is, the more time people spend in public space.

The street is no more just a way, it becomes a living area.

Street furniture turns to be rather furnishing. With emphases on design and quality.



**Street furniture is our theme,  
modernity is our choice,  
the quality is the necessity.**



DESIGN

## **Basic criteria of design:**

- function
- style
- price

**General functional criteria**

- custom properties
- weather resistance
- resistance to vandalism
- easy installation and servicing
- reparability in case of damage

### **Specific functional criteria of a bench:**

- short-term, comfortable
- relaxing and/or separate seating
- single sided
- double sided
- possibly fixed on a wall
- access from all sides



## Specific functional criteria of a litter bin

- volume
- emptying method
- cover
- prepared to be locked

## Specific functional criteria of a bus shelter

- closed (with walls)
- through (without walls)
- illuminated
- with ad showcase
- with information carrier

## General stylish background (criteria)

- always high quality contemporary design with sophisticated details and precise implementation

## Possible expressions

– classic, traditional



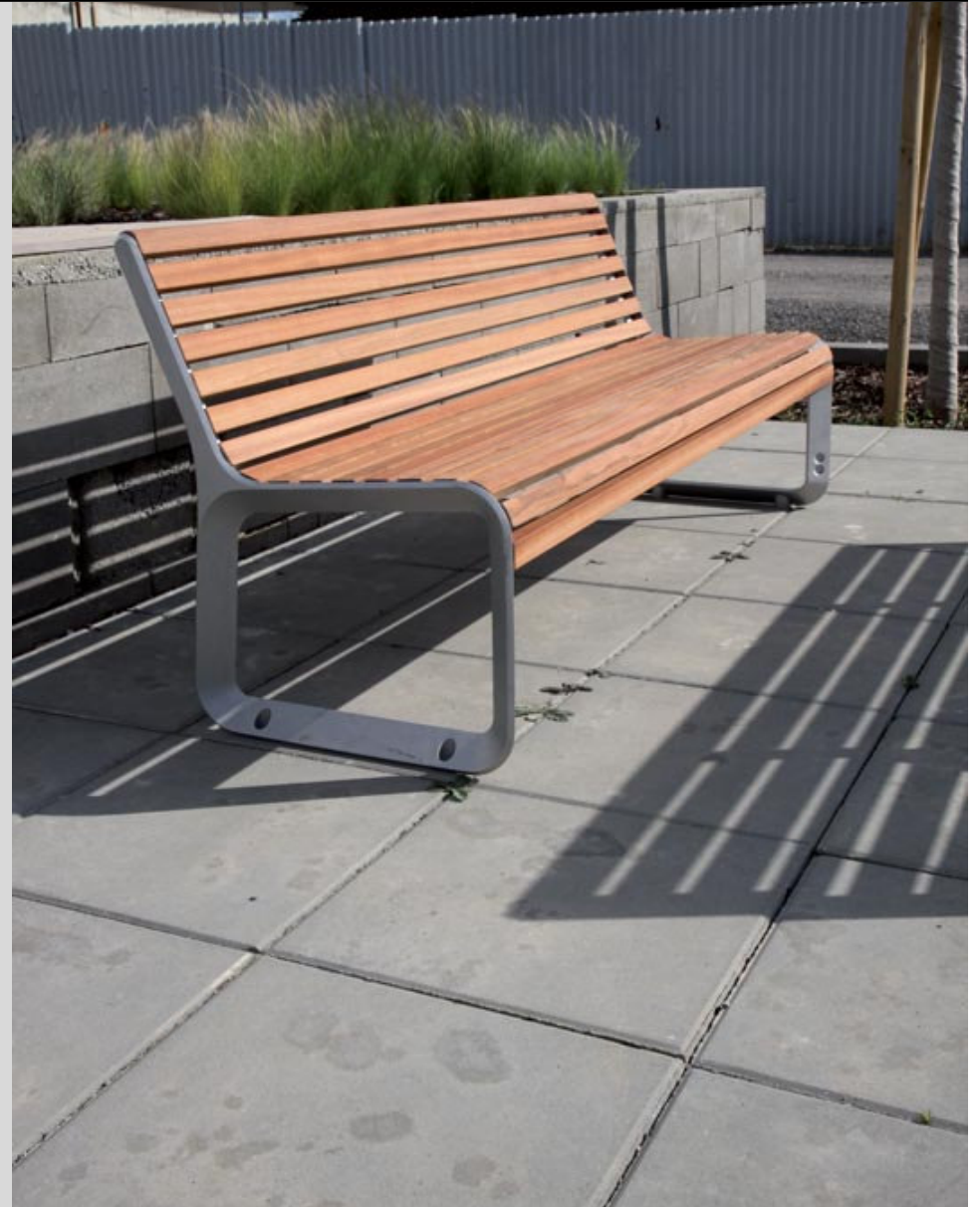
## Possible expressions

–minimalistic, temperate



## Possible expressions

—dynamic, expressive



## **selection of material and its characteristics**

- by function/ resistance, comfort
- by expression /colour, meaning
- by price / affordability
- by thoughtfulness to the environment /tenability

**Price**

- product price
- assembly price
- installation and servicing price



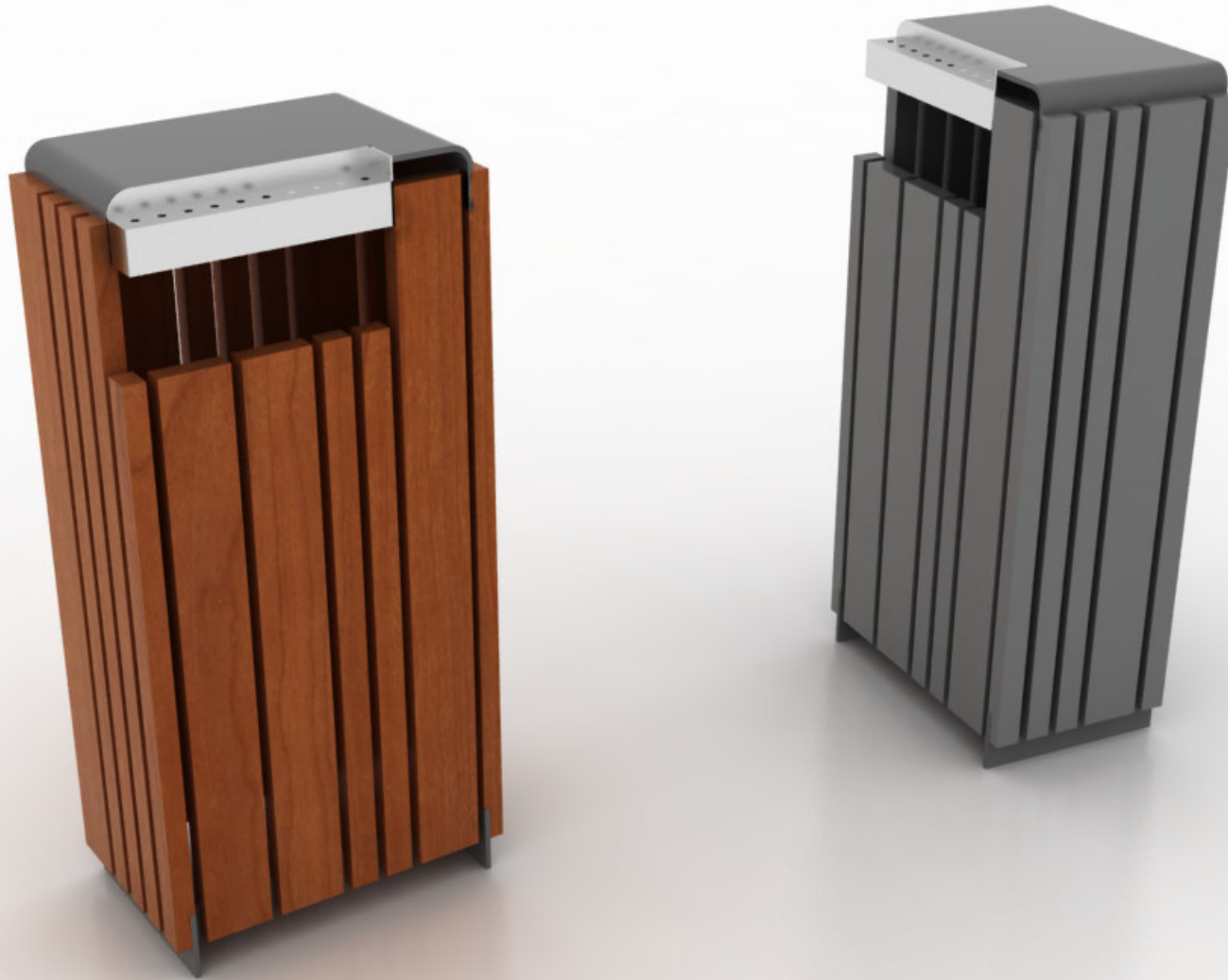


PROCES

mm  
cité

1

litter bin NANUK



mm  
cité

1

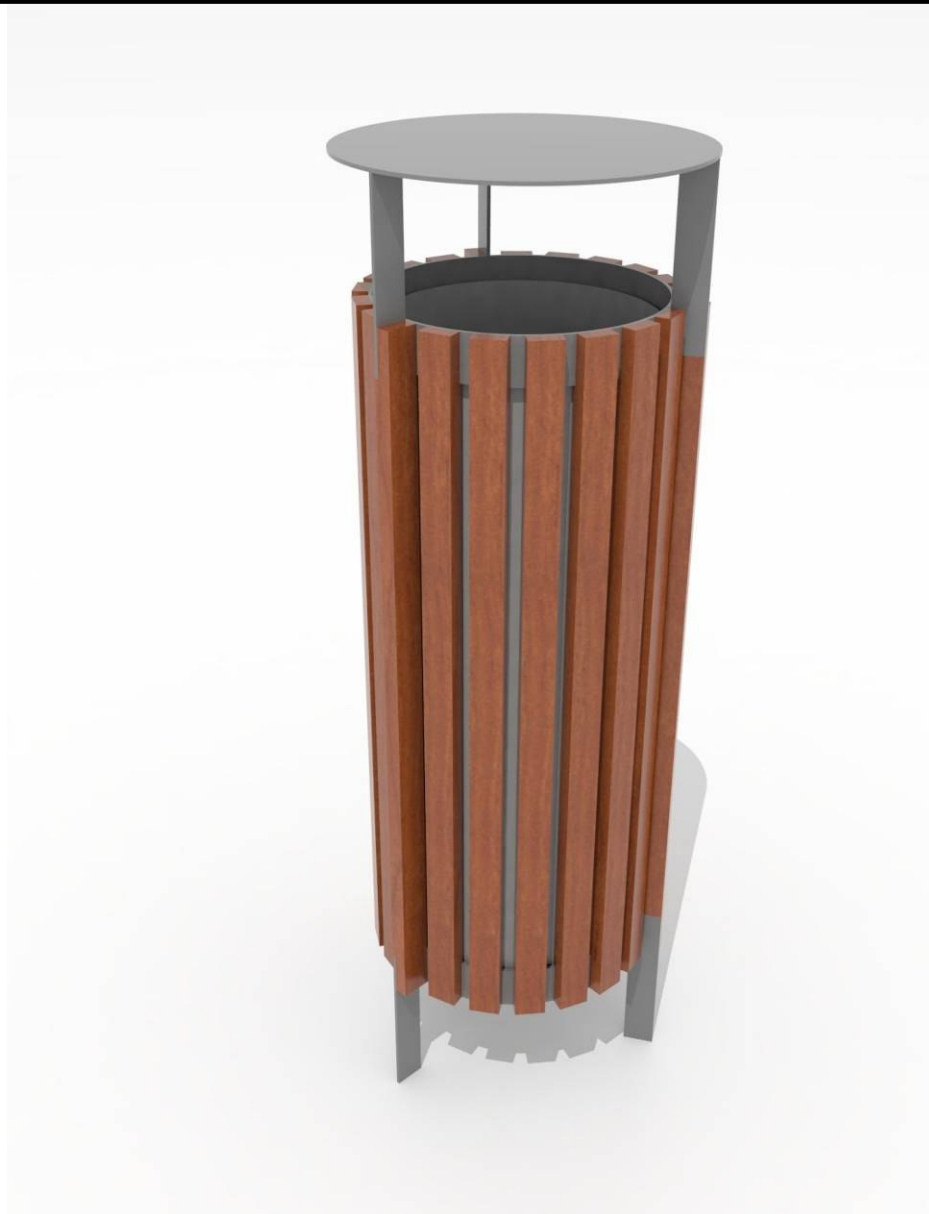
litter bin NANUK



mm  
cité

1

litter bin NANUK



mm  
cité

1

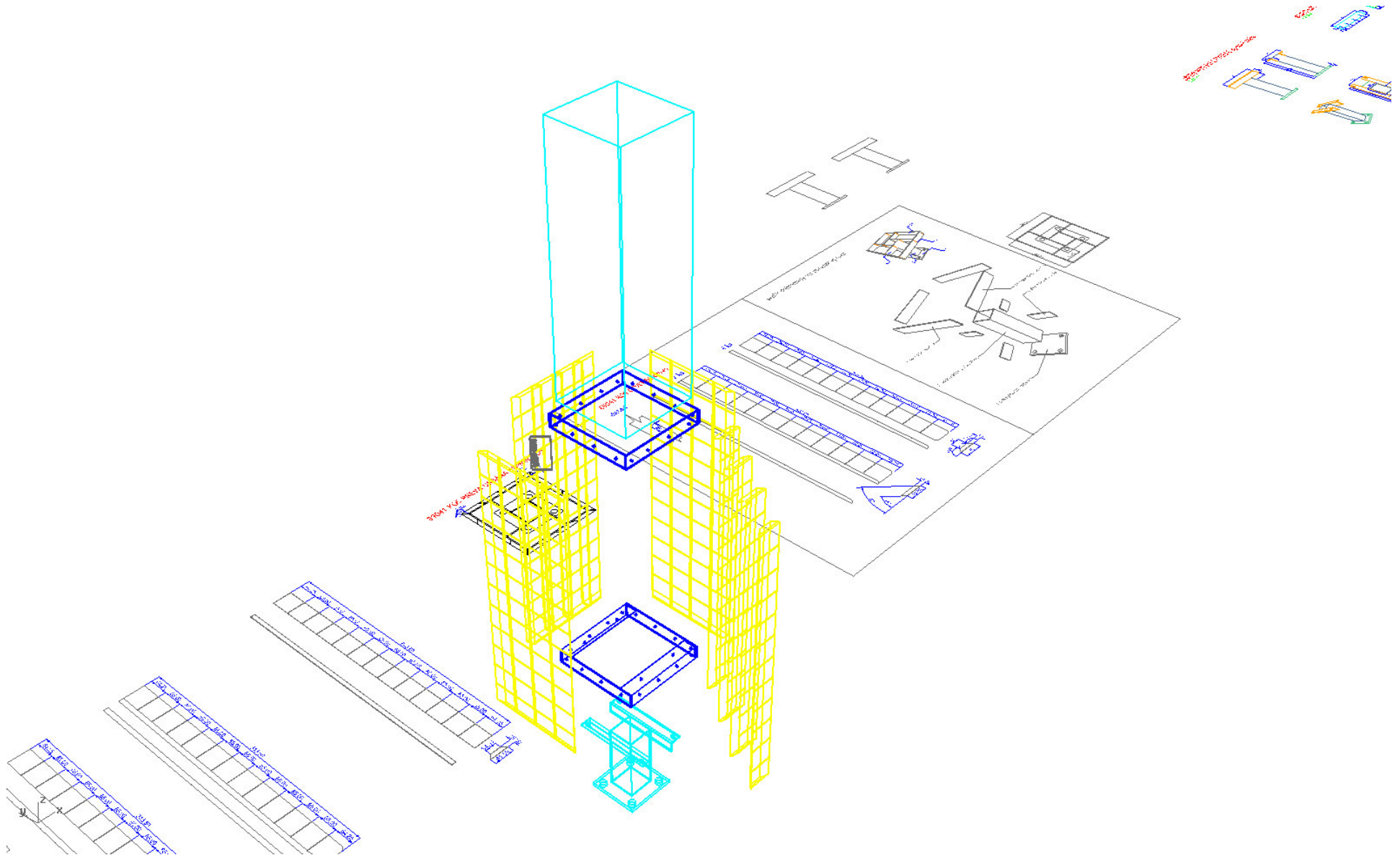
litter bin NANUK



mm  
cité

1

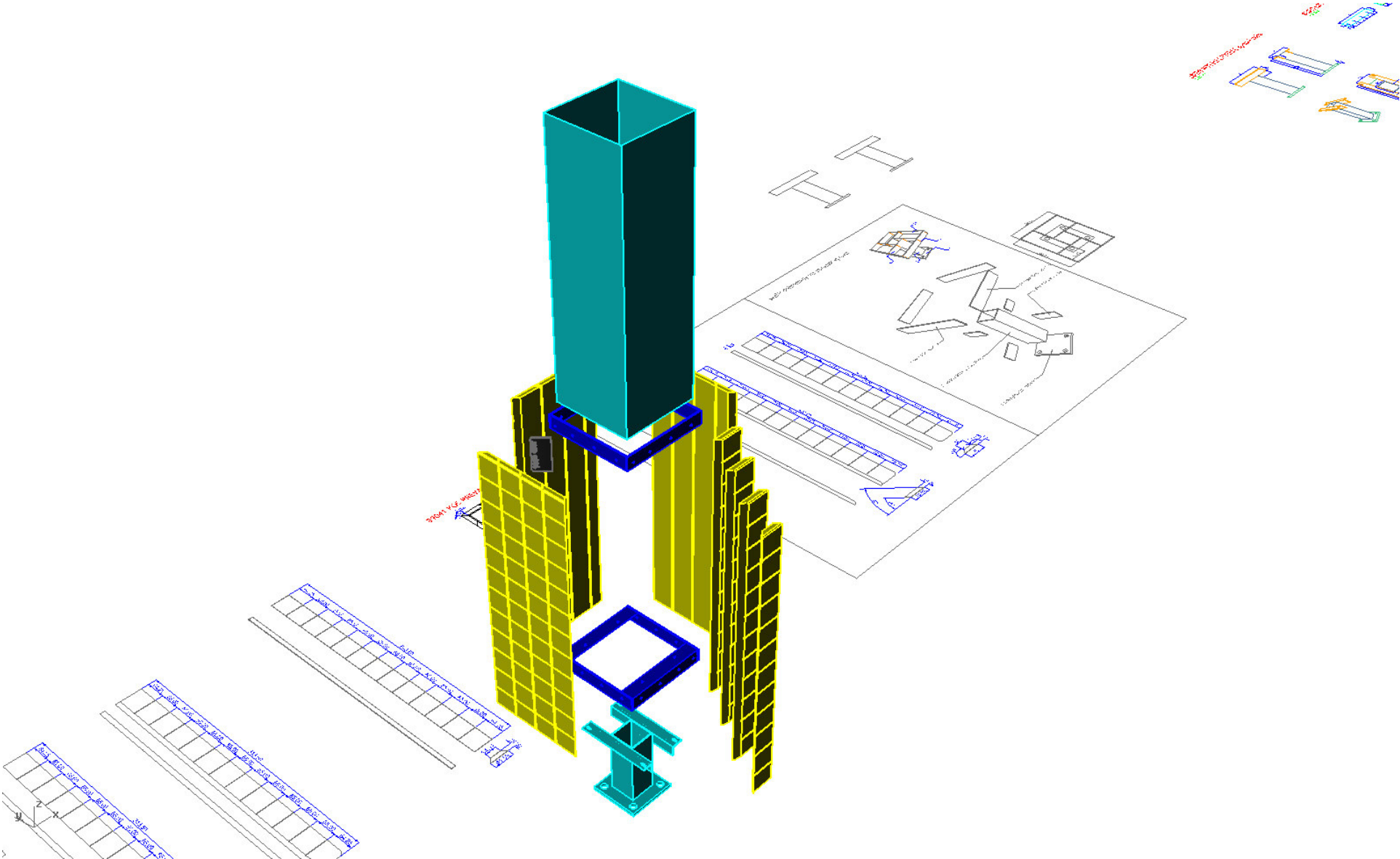
# litter bin NANUK



mm  
cité

1

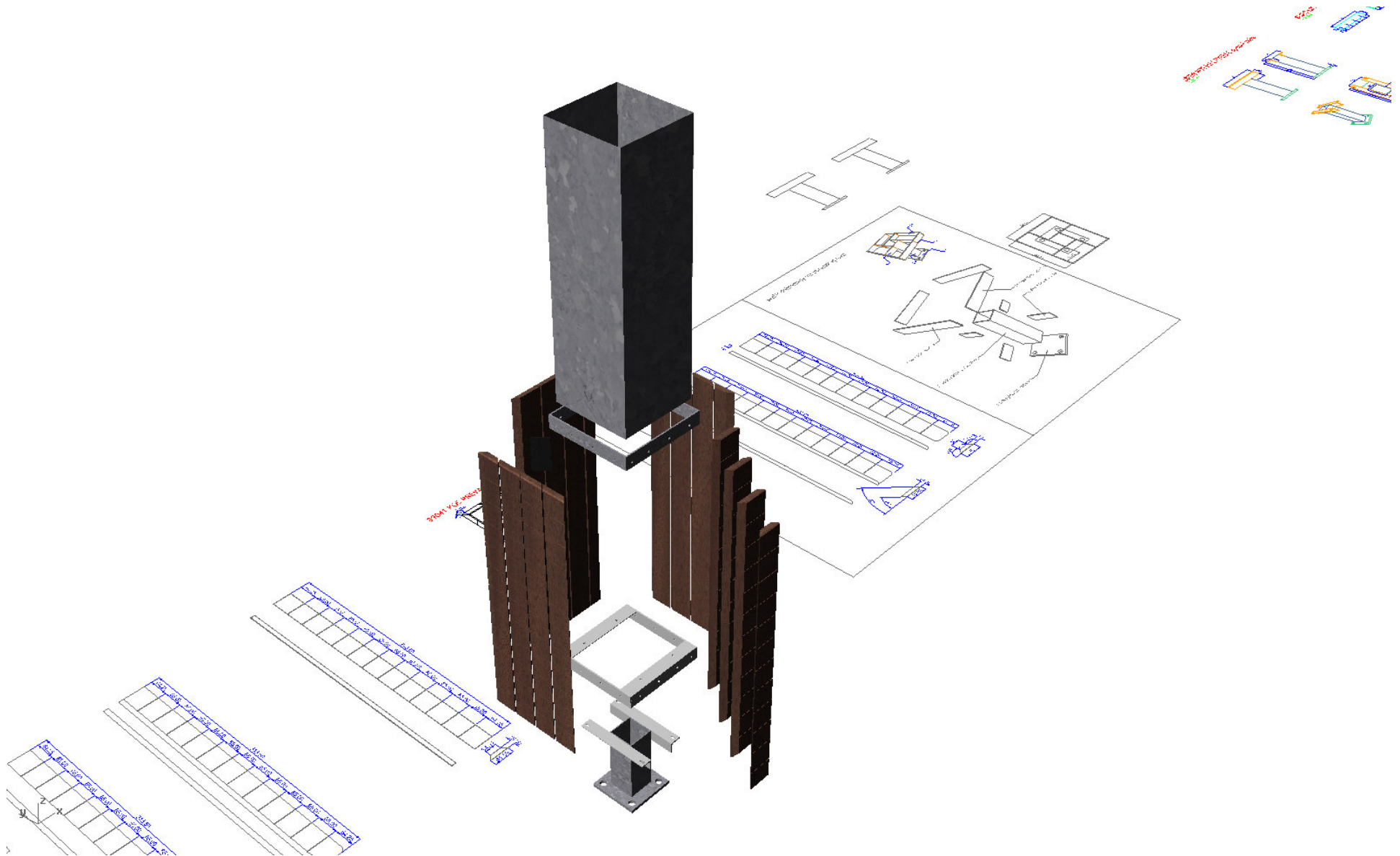
# litter bin NANUK



mm  
cité

1

# litter bin NANUK

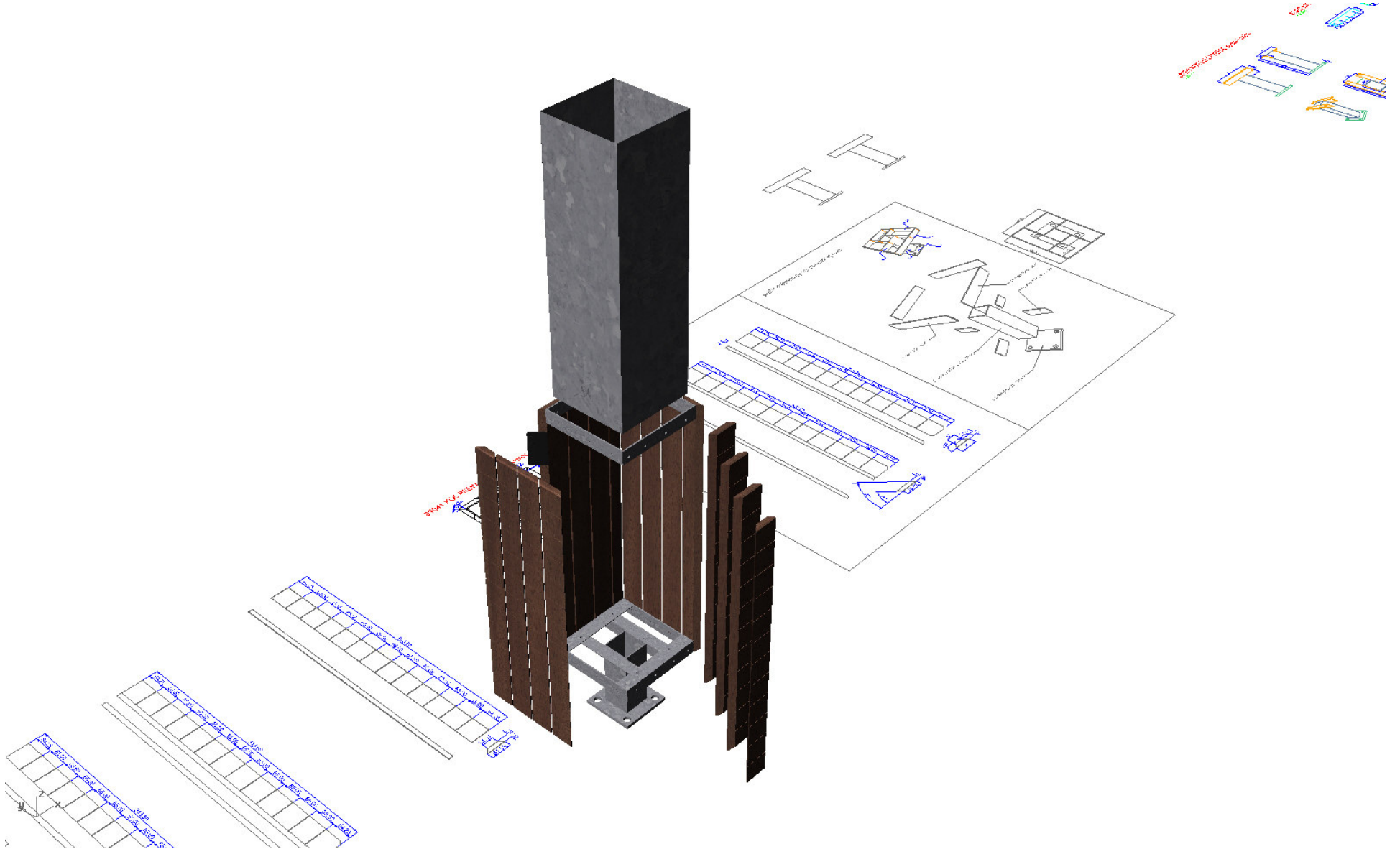




mm  
cité

1

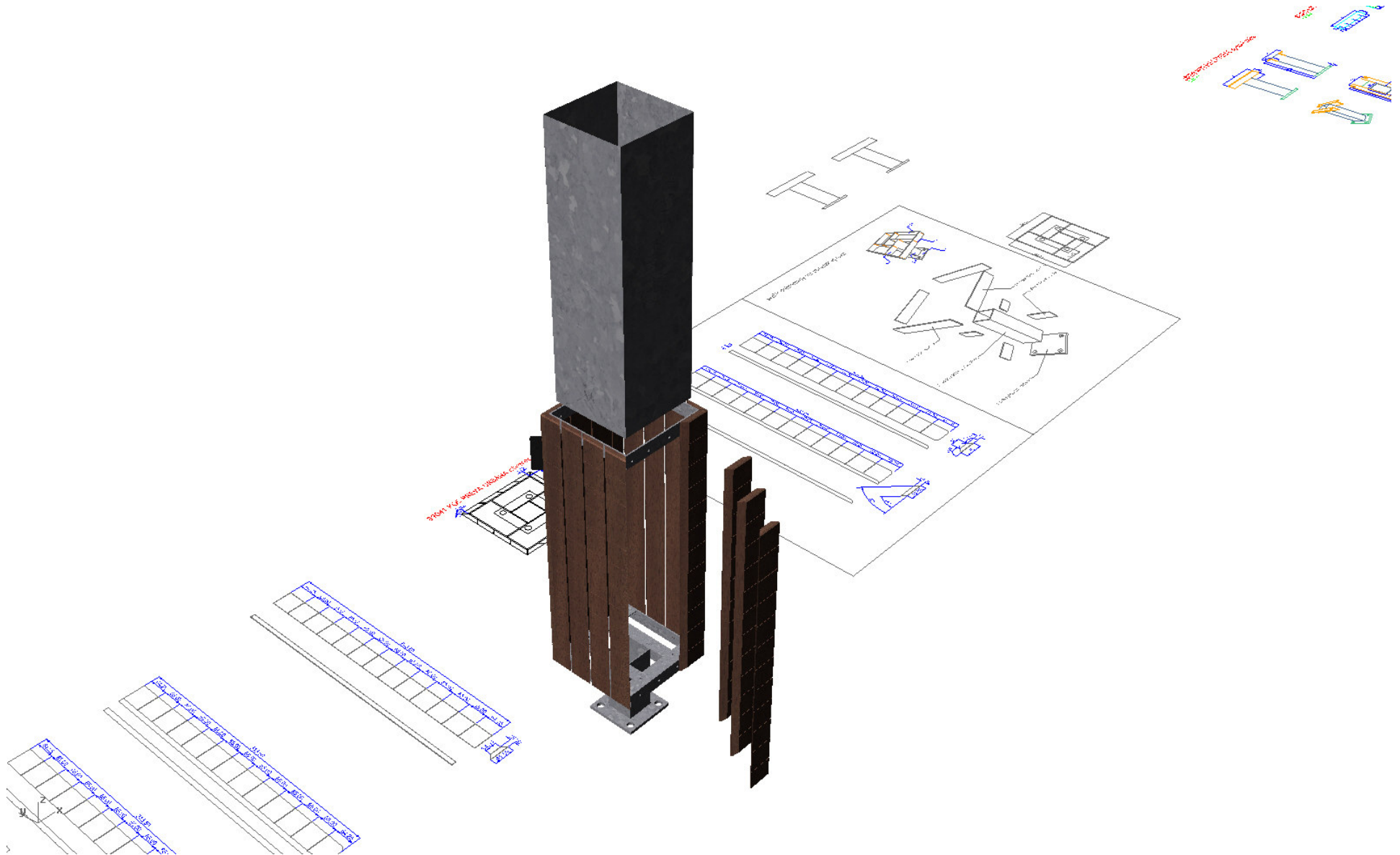
# litter bin NANUK



mm  
cité

1

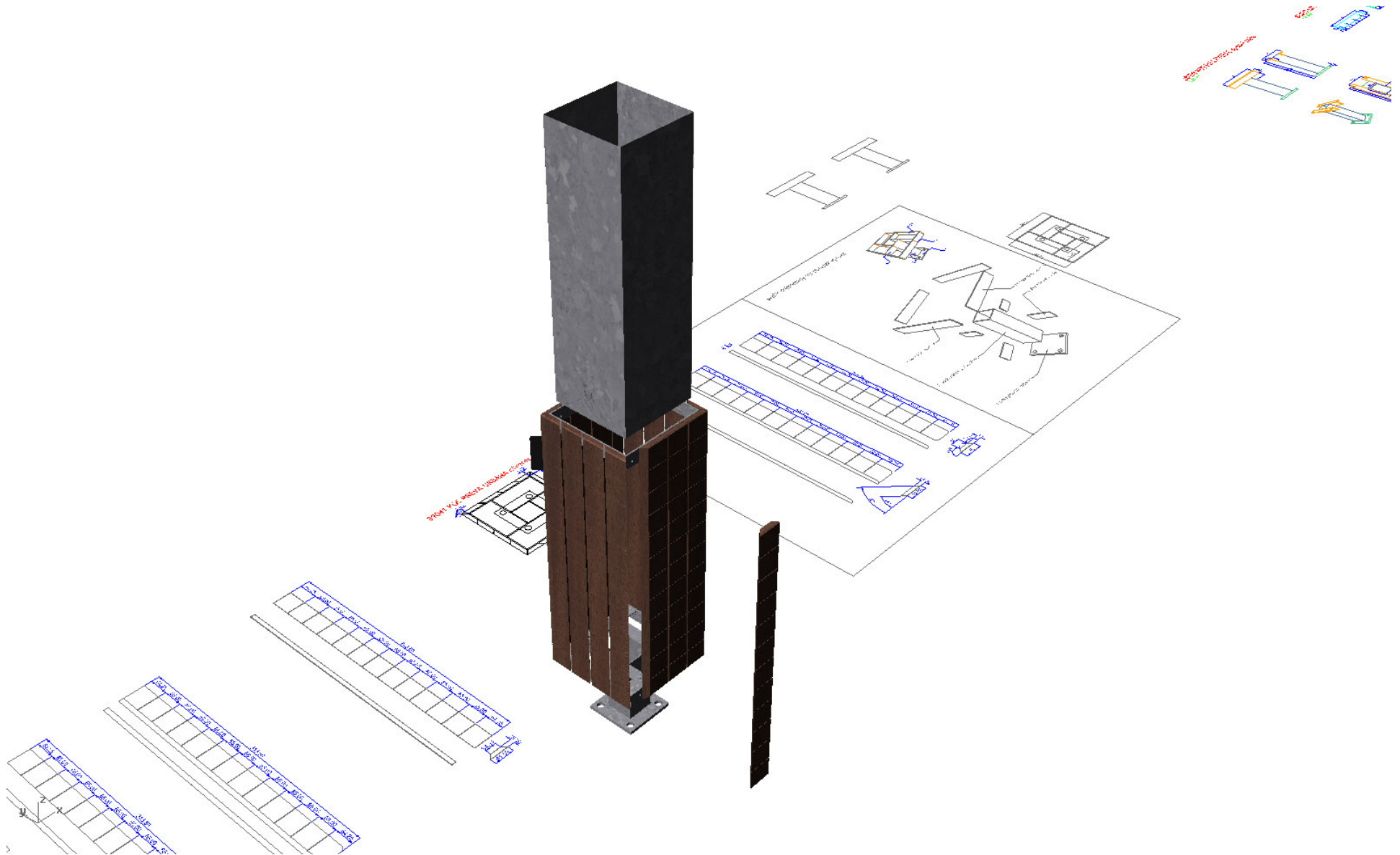
# litter bin NANUK



mm  
cité

1

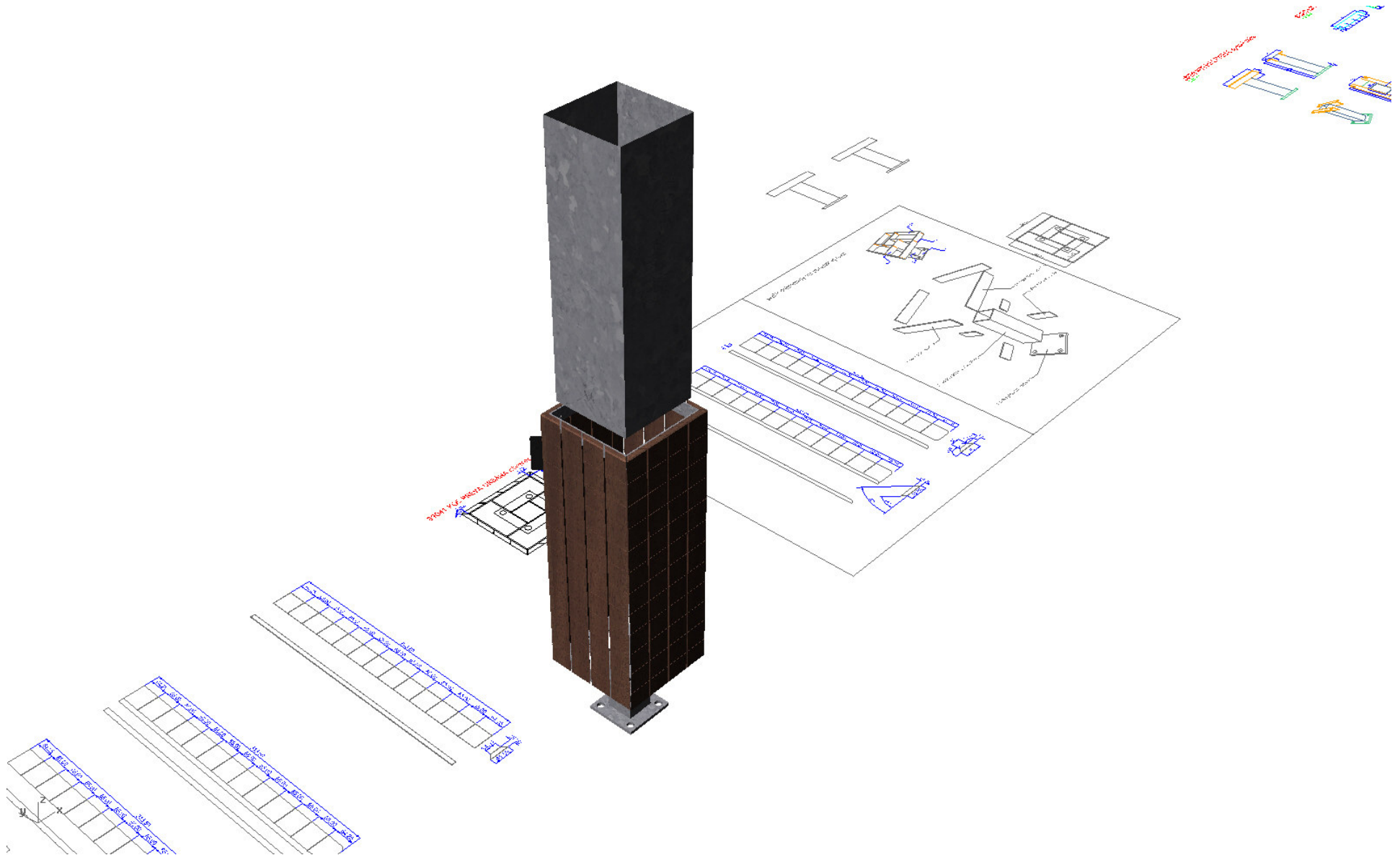
# litter bin NANUK



mm  
cité

1

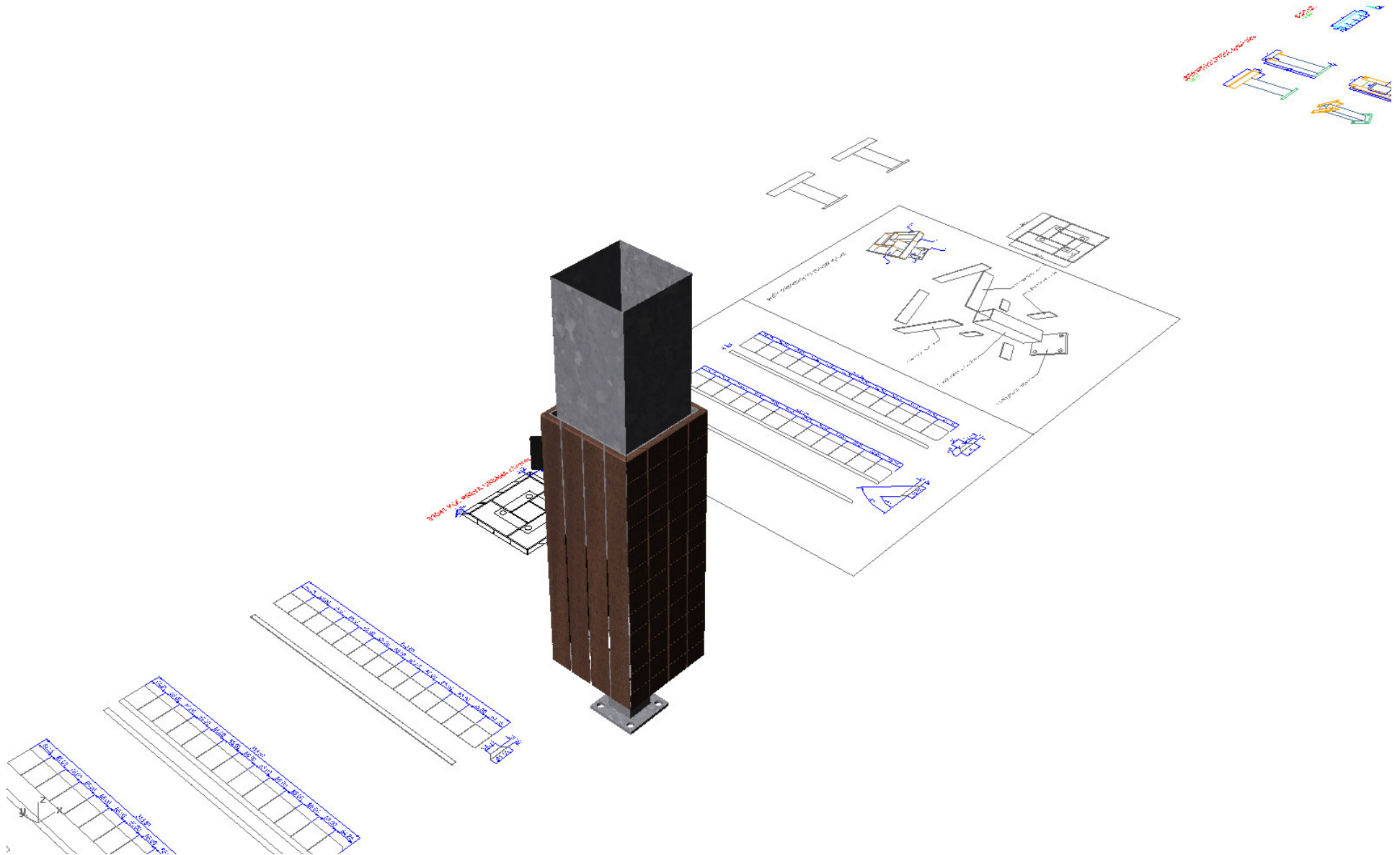
# litter bin NANUK



mm  
cité

1

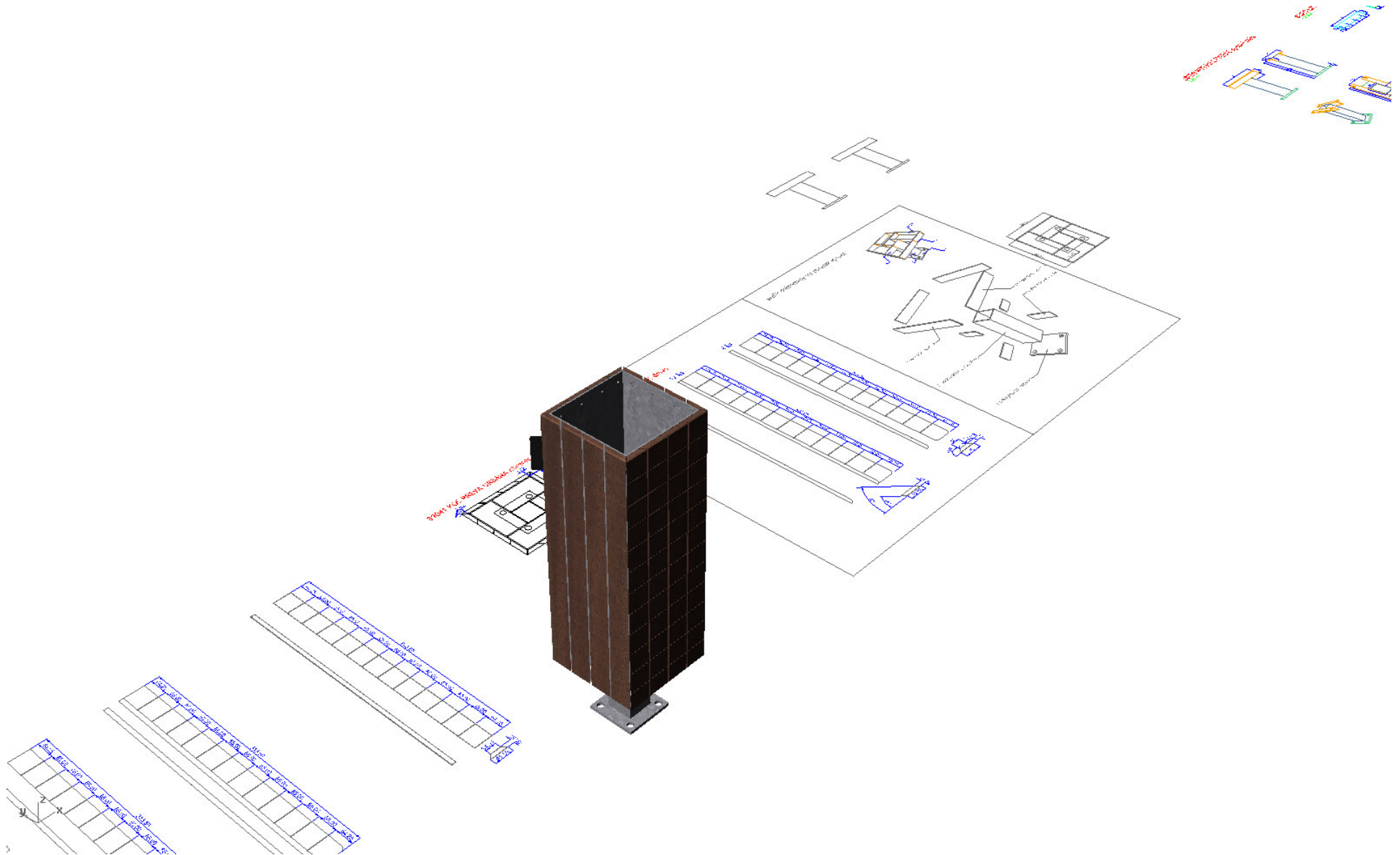
# litter bin NANUK



mm  
cité

1

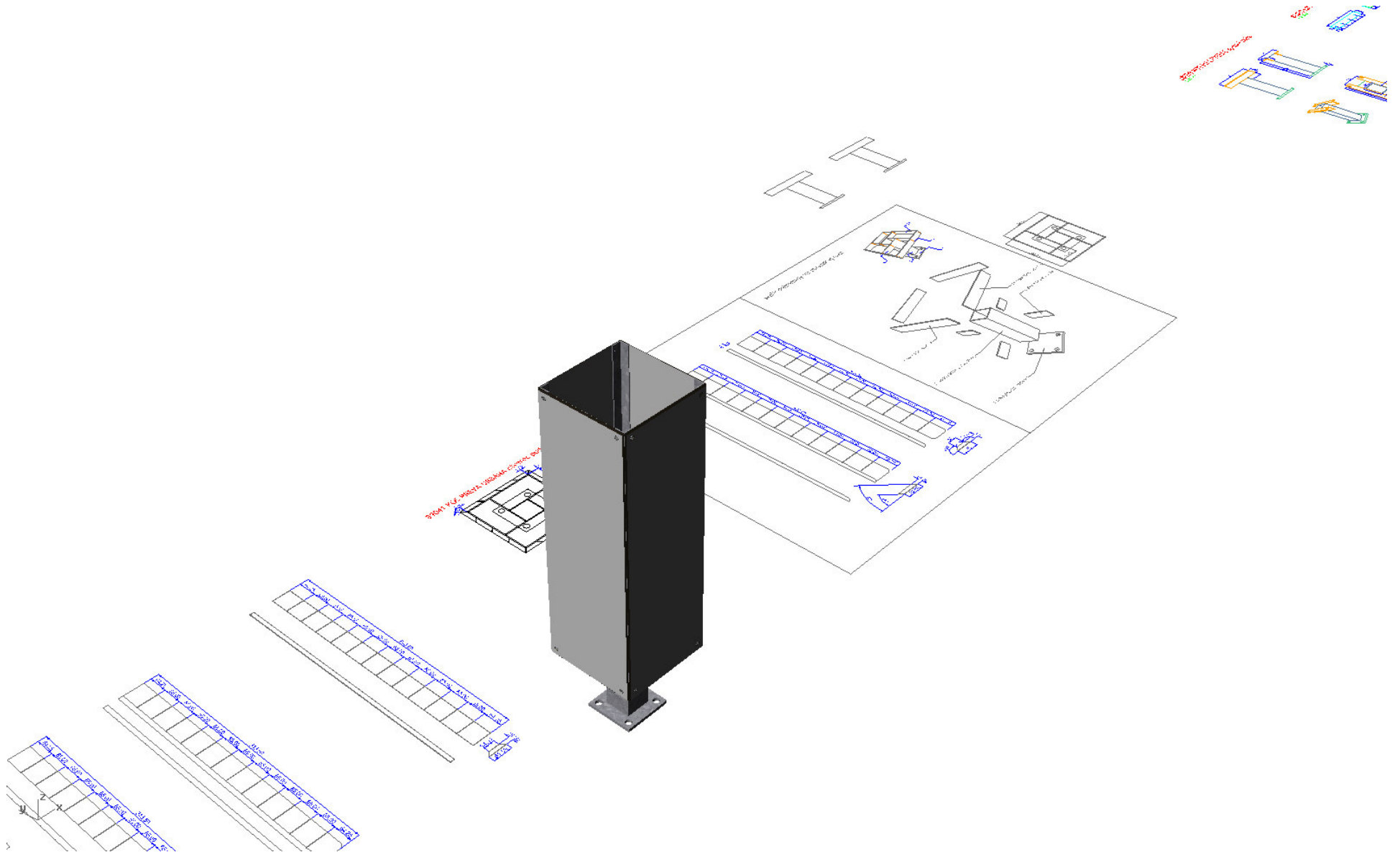
# litter bin NANUK



mm  
cité

1

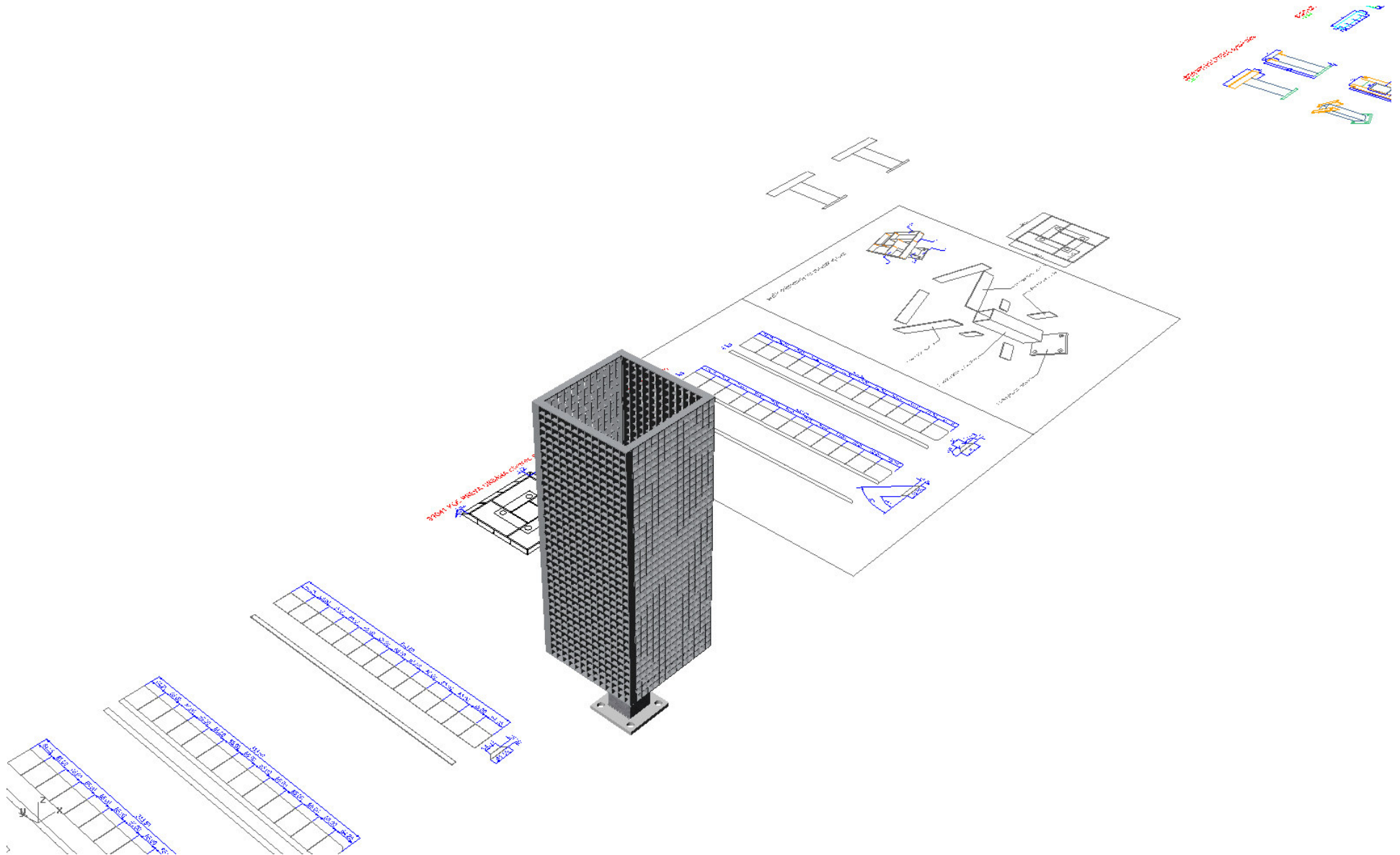
# litter bin NANUK



mm  
cité

1

# litter bin NANUK





mm  
cité

1

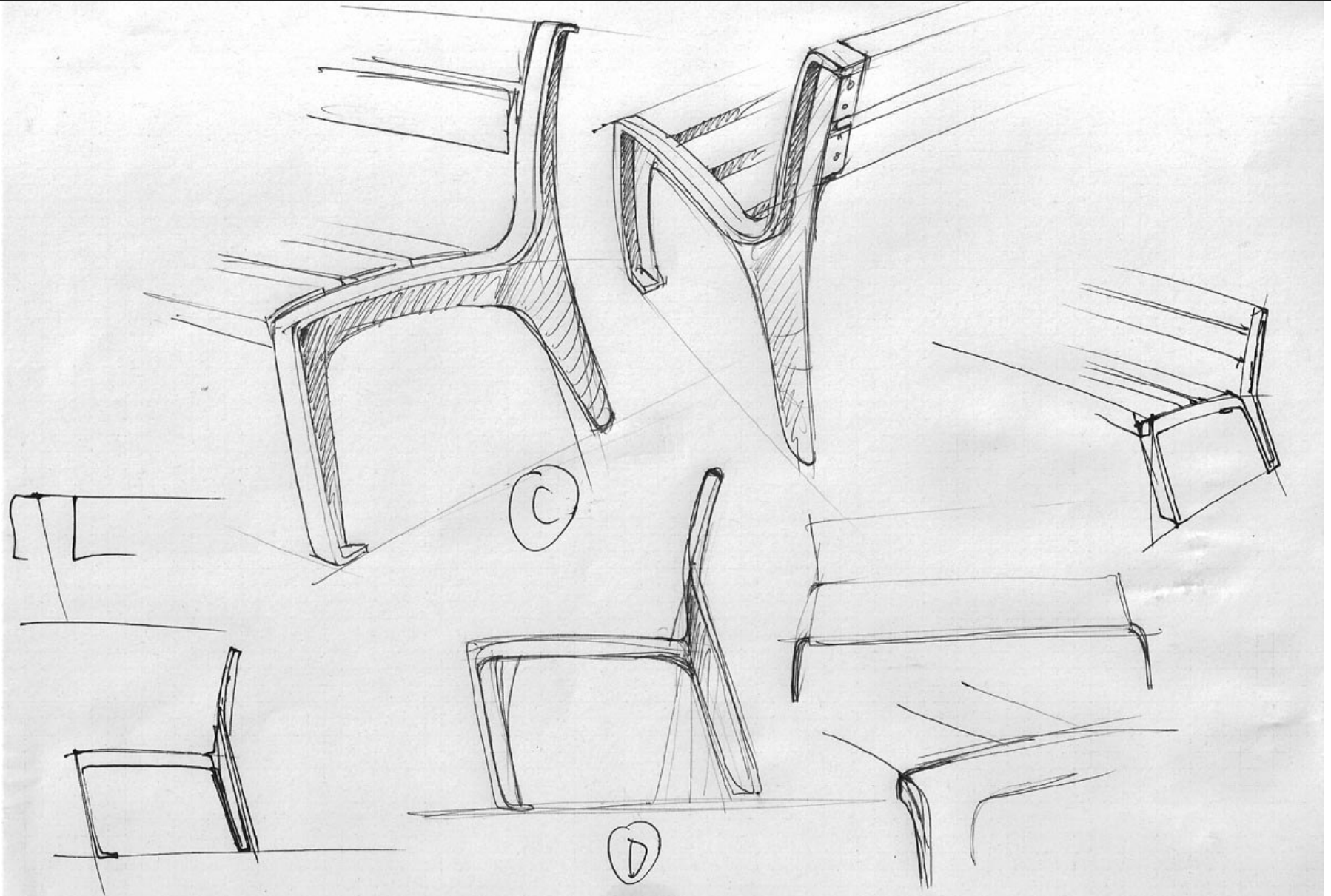
litter bin NANUK



mm  
cité

1

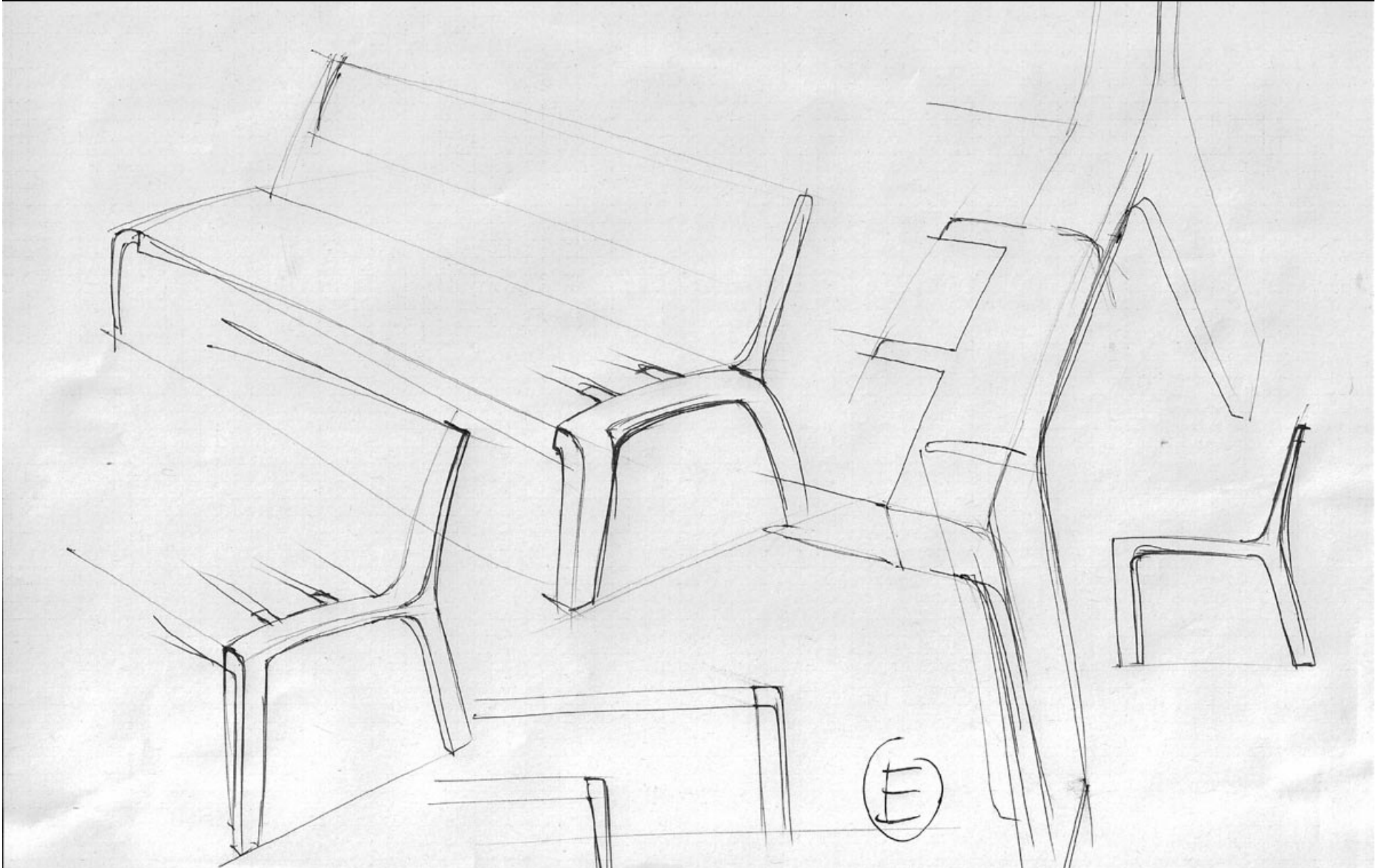
park bench MIELA



mm  
cité

1

# park bench MIELA



mm  
cité

1

park bench MIELA

Perspective



mm  
cité

1

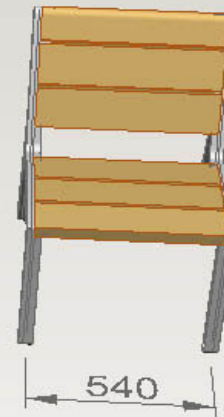
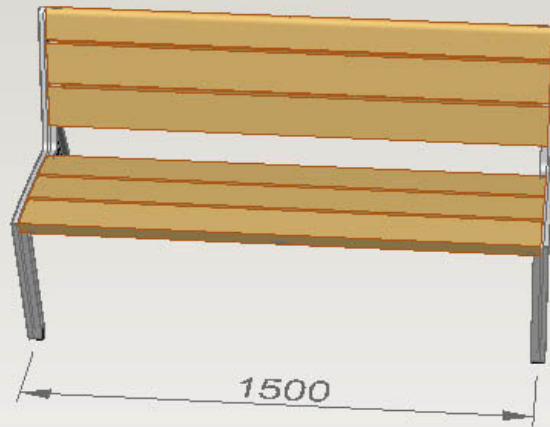
park bench MIELA



mm  
cité

1

# park bench MIELA

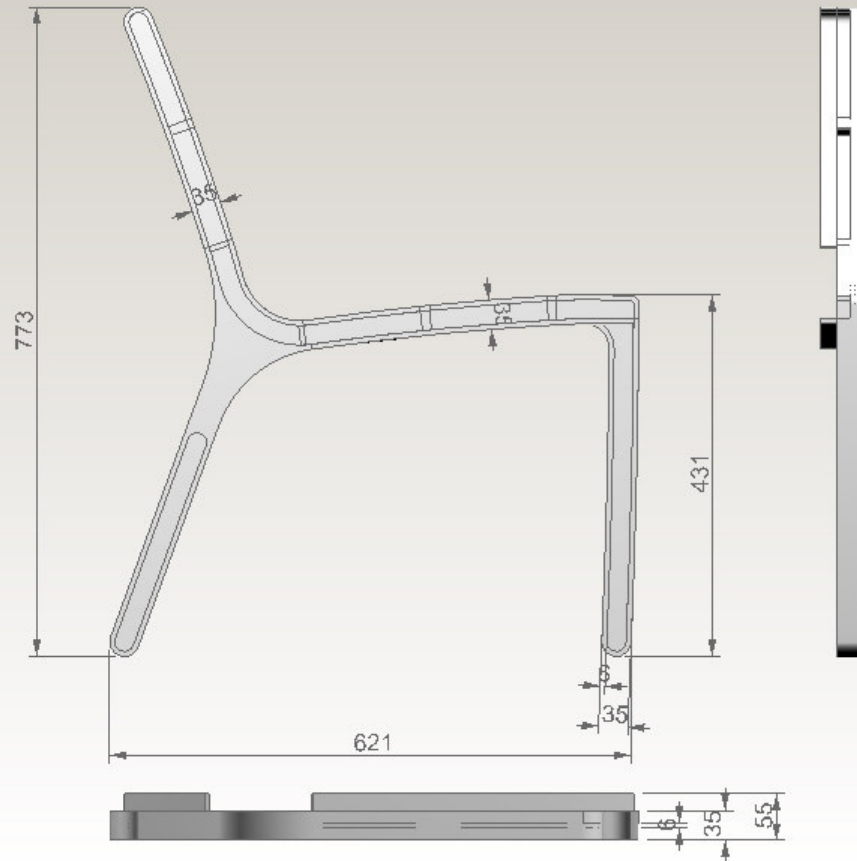


mm  
cité

1

# park bench MIELA

Left



mm  
cité

1

park bench MIELA





mm  
cité

1

park bench MIELA



mm  
cité

1

park bench MIELA



mm  
cité

1

park bench MIELA





PROCES

**důležité souvislosti**



## PROTECTION

We protect intellectual property and know how by registering our trademark and industrial designs with respective offices

The partners of mmcité are responsible for not copying the mmcité products, not facilitating their copying by third parties and for exerting any efforts to prevent copying.

.

**FSC** is an independent, non-governmental, not for profit organization established to promote the responsible management of the world-wide forests. Products carrying the FSC label are independently certified to assure consumers that they come from forests that are managed to meet the social, economic and ecological needs of present and future generations.



The cities deserve to be beautiful. We make it real anywhere they are...



mmcité development